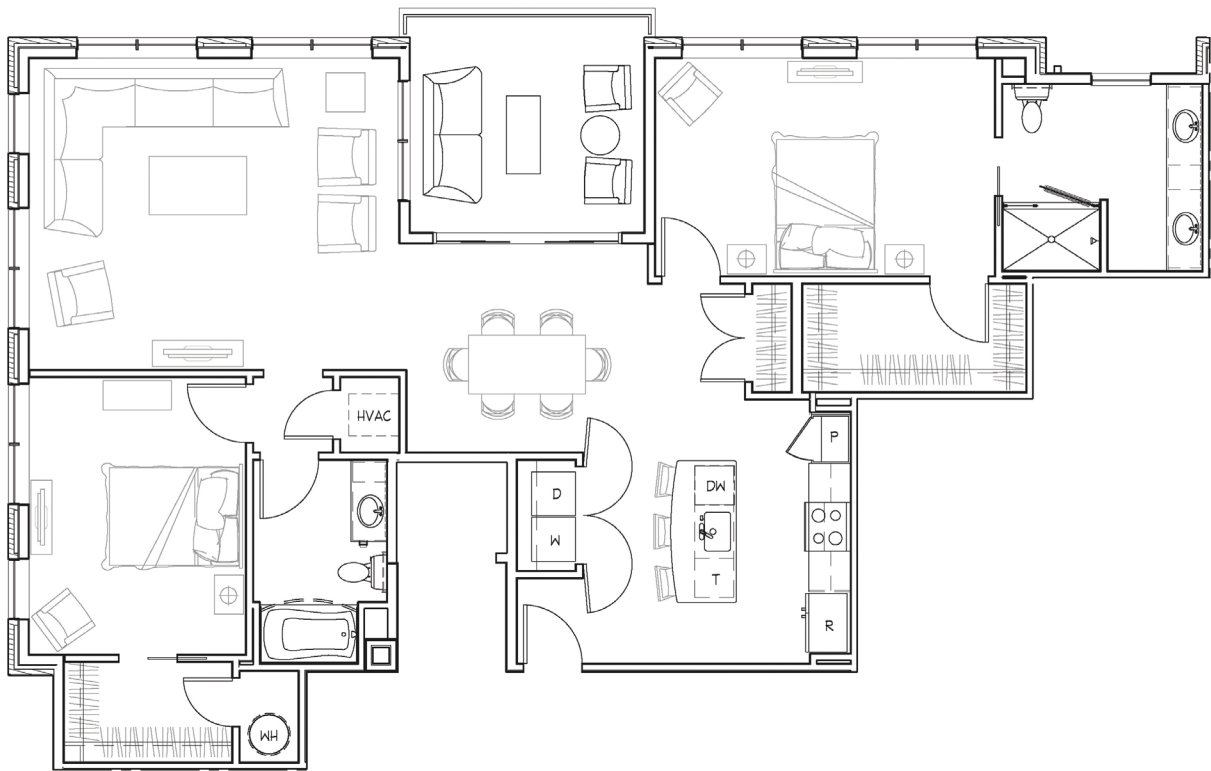


# VICKERS

HISTORIC ROSWELL



## MAGNOLIA



### 2 BEDROOM, 2 BATHROOM

TOTAL SQ FT · 1662

INTERIOR SQ FT · 1522

OUTDOOR SQ FT · 140



1180 CANTON STREET | ROSWELL, GA 30075 | 470.236.0888 | VICKERSROSWELL.COM



Information is believed to be accurate, but not warranted. Specification, pricing and availability are subject to change without notice. See agent for details. Artist's renderings and floor plans are approximate only and are not meant to be exact depictions of the unit. Drawings are not to scale. Your selected floor plan may vary from this illustration due to design configuration and architectural styling. Not all features are available in every apartment. All square footages are approximate.

